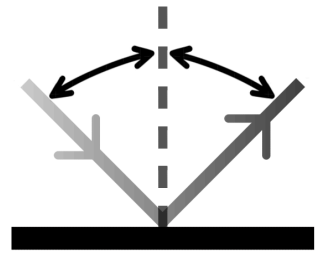


Light Angles



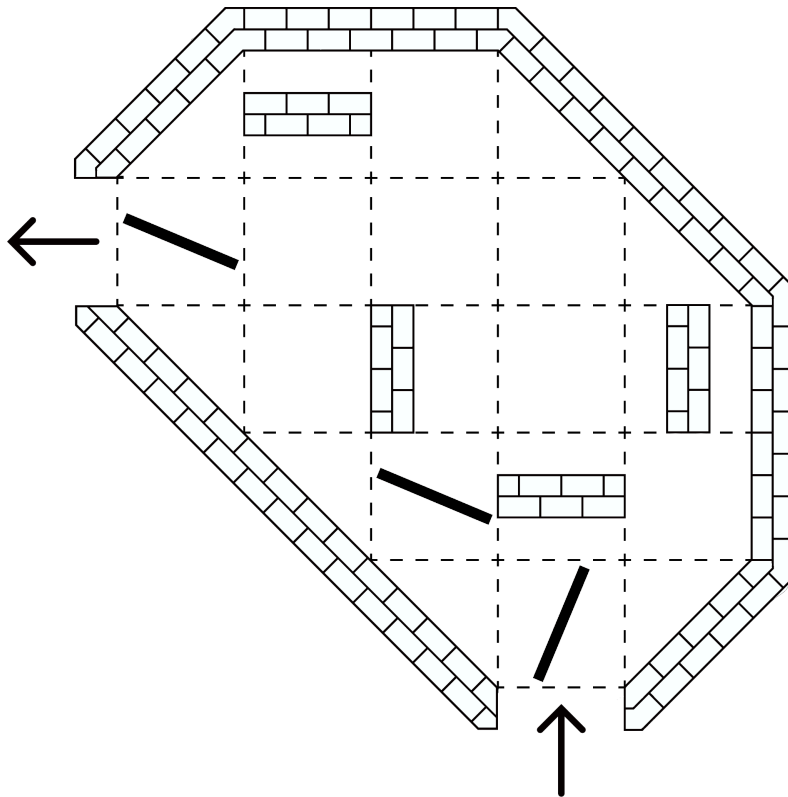
What are these angles? What is the light **signaling**?

Put all of the mirrors into the box so light enters from the \uparrow , exits from the \leftarrow , and bounces off all of the mirrors. When a beam of light reflects off of a mirror, it bounces back at the same angle that it approaches the mirror (example shown on the left). The beam of light will always pass through either the corner or the center of the side of the boxes.

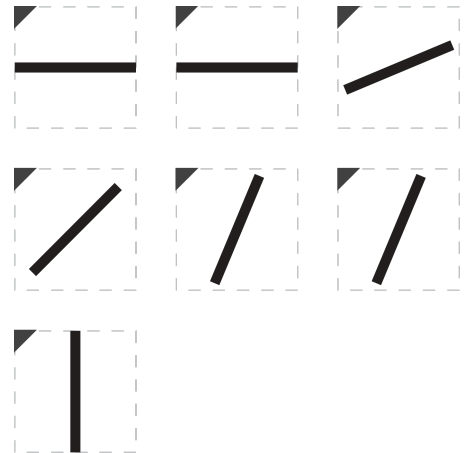


The walls in the chamber (inside and outside) are not reflective, and the dashed grid lines are transparent.

Three of the ten mirrors have already been installed. You decide to label the remaining seven and make a note so you can remember their order.



MIRRORS:



The gray triangles are at the top left corners of the mirrors.

