

# The Get-Away

1/2



Louie Lips: We're stuck in the center of town, Frankie, and the streets are crawling with coppers. We've got to get back to the hide-out with the loot... but which way do we go?

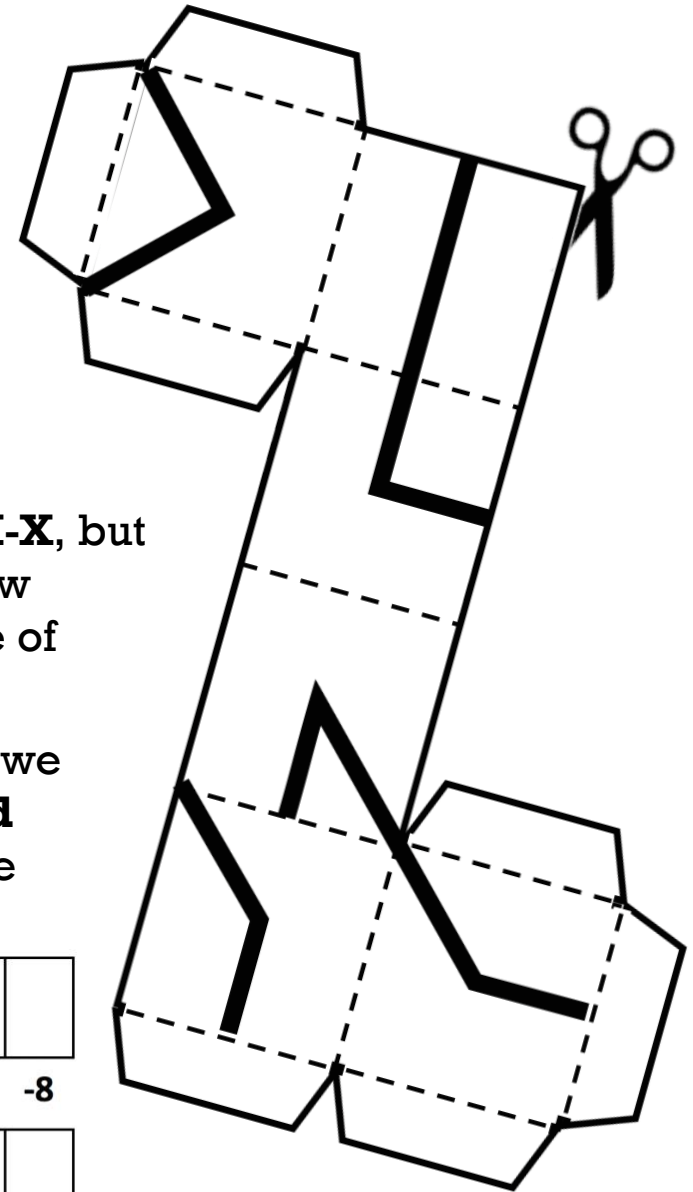
Frankie the Hound: I don't know, Louie, but only one of these routes will get us back to our place. Hey, does this old Nissan **Cube** have GPS? You know: NSWE?

Louie Lips: Sorry, Frankie, all it has is UNIX – that's **U-N-I-X**, but hey, that's a **start!** Let's lay low behind this **semi for** a few minutes, and then we'll **shift it** into high gear before one of those officers tries to **flag** us down!

Frankie the Hound: Then we'll just **keep on rolling** until we get there. You know, Louie, I'm actually pulling a **second shift** tonight – a thief's work is never done. I just hope we don't run into any police barricades!

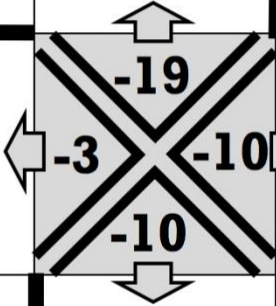
Fold and tape the cut-out into a cube, then start with it in the center square with the orientation of the ▼-face determining the path you take.

+14	+10	-2	-11		-3	-8	+7	-6	-8



# The Get-Away

2/2

<b>+3</b>	<b>+14</b>	<b>+5</b>	<b>-1</b>	<b>+0</b>	<b>+1</b>	<b>-2</b>
<b>-21</b>	<b>-5</b>	<b>-13</b>	<b>-17</b>	<b>-2</b>	<b>-13</b>	<b>+5</b>
<b>+21</b>	<b>-6</b>	<b>-3</b>		<b>+11</b>	<b>-17</b>	<b>+16</b>
<b>+1</b>	<b>-3</b>	<b>+6</b>	<b>-13</b>	<b>-10</b>	<b>-8</b>	<b>+0</b>
<b>+1</b>	<b>-16</b>	<b>+5</b>	<b>-24</b>	<b>+1</b>	<b>-16</b>	<b>+12</b>