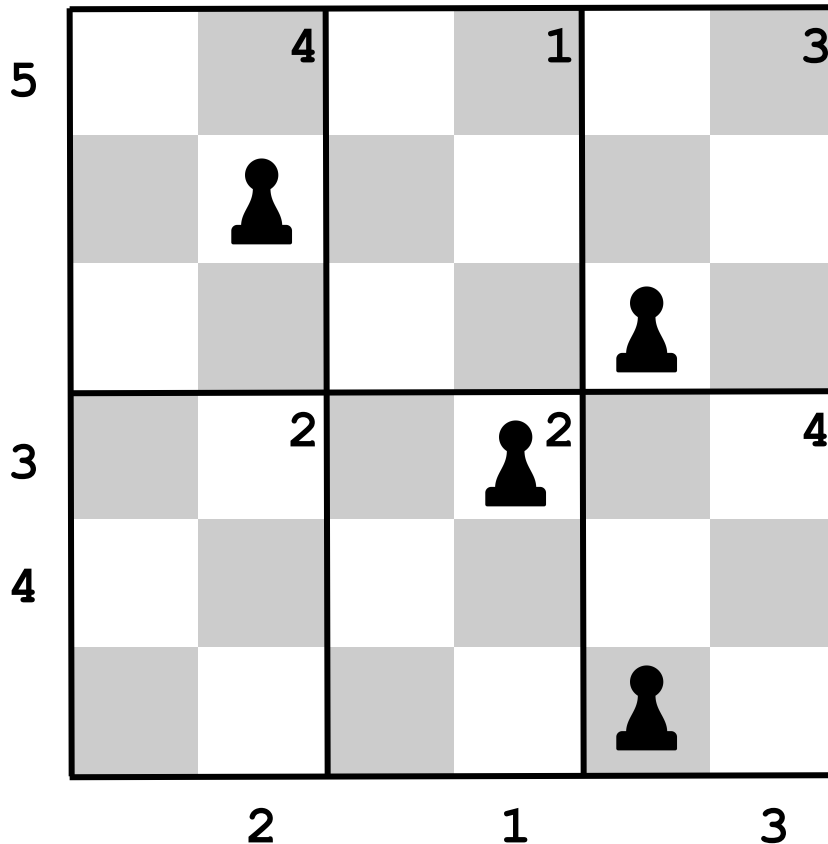


SO YOU WANT TO LEARN CHESS?

I can't see why you wouldn't! It's all the rage. In this puzzle set, I'll teach you everything you need to know.

First, let's set up your pawns. I've already set up a few, so I'll leave the rest to you. Just follow the simple instructions below. You'll have a feel for it in no time!



1. The numbers on the side indicate how many pawns are in that **row**.
2. The numbers on the bottom indicate how many pawns are in that **column**.
3. The numbers on the chess board indicate how many pawns are in that **2x3 rectangle**.
4. And finally, make sure there's at least 6 pawns on black tiles!

= _ _ _ _ _