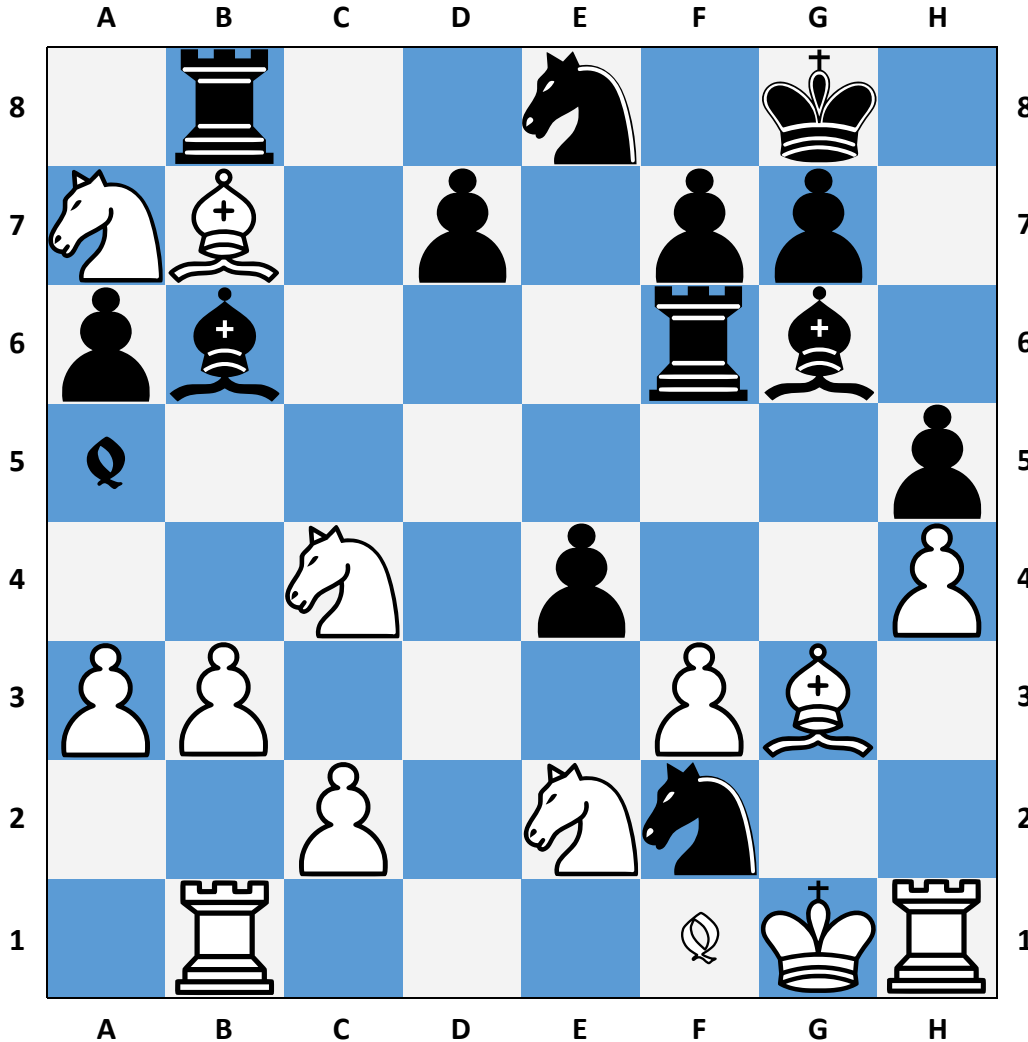






Puzzled Pint

Pièce De Résistance

Two queens move together across the field, bearing their battle flags and acting with unrelenting devotion to their code. Ultimately only a black queen is left. Name her.



 and  are queens' starting positions



White

Black

The Queen's Code

1.	_____	_____
2.	_____	_____
3.	_____	_____
4.	_____	_____
5.	_____	_____
6.	_____	_____

1. Make legal chess moves using only queens.
2. Only make a capture if it is the only legal chess move.
3. Do not move to a square where a queen will be threatened by a piece other than another queen.
4. Including the queen's starting square, do not land on the same square multiple times with the same queen unless it is the only legal chess move.
5. Do not move a queen backwards over squares she just traversed unless it is the only way to avoid violating rules 1 - 4.
6. Choose the move that travels as many squares as possible without violating the other rules.